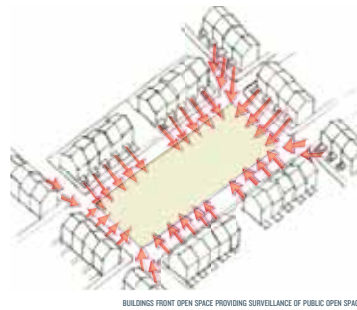


DEFENSIBLE SPACE



Eyes on the Street

Natural Surveillance
 Witnesses Deter Crime
 Putting "Eyes on the Street"
 Keep Public Spaces in View
 Well lit Streets



BUILDINGS FRONT OPEN SPACE PROVIDING SURVEILLANCE OF PUBLIC OPEN SPACE



STOOPS PROVIDE TRANSITION ZONE AND PLACE FOR INTERACTION



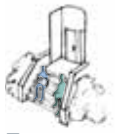
STOOPS PROVIDE TRANSITIONAL ZONE AND BAY WINDOWS PUT EYES ON THE STREET



HOUSING OPENS TO AND OVERLOOKS SHARED OPEN SPACE

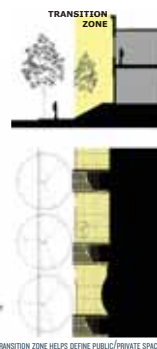
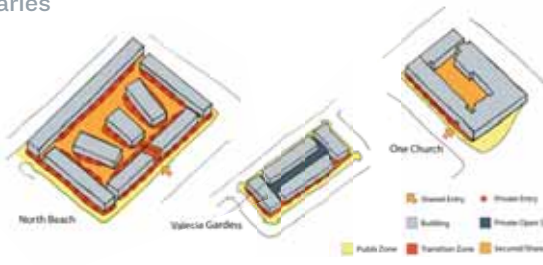


A STREET WALL OF GARAGE DOORS PROVIDES NO NATURAL SURVEILLANCE OF SIDEWALK AND STREET



Well-defined Public/Private Space

Encourage Interaction Between Neighbors
 Create Transition Areas (Stoops/Front Porches)
 Encourage "Ownership" of Shared Spaces
 Reinforce boundaries



TRANSITION ZONE HELPS DEFINE PUBLIC/PRIVATE SPACE



CLEARLY DEFINED PATHWAYS



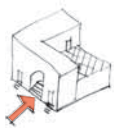
STOOPS AND GATED FRONT YARDS DEFINE PUBLIC/PRIVATE SPACE



FRONT DOORS OPEN ONTO OPEN SPACE



BUILDINGS FRONT STREET AND OPEN SPACE

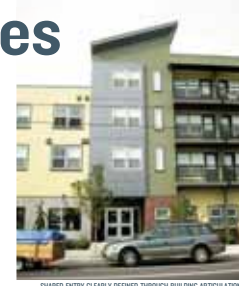


Well-defined Paths & Entries

Natural Access Control
 Defined Public Paths
 Discourage Access to Private Areas
 Defined Entries
 Connections through neighborhood
 Secure Access to Podiums and Parking
 No Dead-End Streets



STREET LAYOUT AND BUILDING PLACEMENTS DEFINE PATHS AND PUBLIC/PRIVATE SPACE



SHARED ENTRY CLEARLY DEFINED THROUGH BUILDING ARTICULATION



SHARED ACCESS CLEARLY DEFINED BUT LEADS TO DARK ENTRY



DEFINED AND SECURE ACCESS TO PODIUM



NO DEFINED PATH AND PUBLIC/PRIVATE SPACE



Secure Construction

Security Systems: gates, lights, cameras, locks
 Secure Access to Podiums and Parking
 Good locks on Doors and Windows
 Neighborhood Watch



GATES DEFINE ENTRIES AND LIMITS ACCESS



STRONG COMMUNITY SETS STANDS FOR NEIGHBORHOOD



SECURITY CAMERAS DETER CRIME



SECURITY SYSTEM LIMITS ACCESS TO BUILDING