

ISLAIS
PLACE

HOPE SF OFFSITE OPPORTUNITY: Islais Place

HOPE SF OFFSITE OPPORTUNITY: Islais Place

In July 2023, the San Francisco Housing Authority (SFHA) will send an interest survey for Islais Place, a new affordable housing community located in the Excelsior District of San Francisco. Brand new 1-bedroom, 2-bedroom and 3-bedroom apartment homes will be available for move-in as soon as Winter 2023!

Please note that this is a type of project-based housing assistance.

As a current Potrero Hill resident, your household has the right to a new revitalized unit. Please be advised that moving to Islais Place would constitute exercising your right to a new revitalized unit. Moving to Islais Place is completely voluntary and is not mandatory.

This resident information packet provides an overview of the property and neighborhood. In the coming days and weeks, BRIDGE will share more information to help your decision making.

Be sure to add us on Facebook at www.facebook.com/PotreroIsHome and on Instagram (IG) at www.instagram.com/PotreroIsHome.

If you have any questions, please reach out to:

SF Housing Authority (SFHA survey or process)

Ana Campos

650.356.8351

camposa@SFHA.org

Shanti Project (Help with survey & leasing document compilation)

Raquel Hall

415.961.6239

rhall@shanti.org

BRIDGE Housing (Islais Place construction or leasing)

Leo Battle

415.321.3508

lbattle@bridgehousing.com



ISLAIS
PLACE



ISLAIS PLACE

Amenities

- Community room with kitchen
- Courtyard
- Bike Parking
- Elevator-served building
- ADA-accessible building
- On-site laundry facilities
- Professional on-site management
- Limited car parking
- See map for more community amenities.
- See the resident Packet for more info on typical apartments.

Timeline

July 2023 —Begin outreach to Potrero residents for SFHA Survey

September 2023—Tour of Islais Place

October 2023 – Random drawing for survey processing order.

October 2023—SFHA begins eligibility appointments.

January 2024—First move-ins begin.

July 2024—Final move-ins finish



New Housing Opportunity for Potrero

Households in the Excelsior District

4840 Mission Street, San Francisco, CA 94112



Islais Place is located at 4840 Mission Street and is managed by BRIDGE Property Management Company, offers 137 affordable apartments, consisting of 1-, 2-, and 3-bedroom apartments. 35 units are set aside for HOPE SF residents. Some units are built out with special modifications for mobility and sensory impairments. This brand-new property is estimated to complete construction in December 2023.

No. of Units	Unit Size	AMI Level	Rent
9	1 BR	60%	Approx. 30% of household’s gross monthly income
20	2 BR	50-60%	
6	3 BR	60%	

Maximum Monthly Gross Income Based on Household Size*							
	1	2	3	4	5	6	7
50% AMI	-	\$4,804	\$5,404	\$6,004	\$6,487	-	-
60% AMI	\$5,041	\$5,766	\$6,483	\$7,204	\$7,783	\$8,358	\$8,933

Important information about this opportunity:

- Voluntary—this move is completely voluntary. You do not have to move if you do not want to.
- Moving to Islais Place would constitute exercising your right to a new replacement unit, and you will not have the right to return to Potrero Hill.







BRIDGE staff is here to help you! If you have questions or need help, please contact BRIDGE staff.

Our staff is able to translate to Spanish, Traditional Chinese, Simplified Chinese, Vietnamese and Russian.

ISLAIS PLACE - 4840 Mission Street - Nearby Amenities






LEGEND

- 
Grocery
 - Safeway: 4950 Mission
 - SF Farmer's Market: 4929 Mission
 - La Loma Produce: 4788 Mission
- 
Healthcare & Pharmacy
 - Balboa Teen Health Center: 1000 Cayuga Ave
 - Clinic By The Bay: 4877 Mission
 - Excelsior Health Services: 888 Paris St
 - Mission Neighborhood Health Center: 4434 Mission
 - Safeway Pharmacy: 4950 Mission
 - Walgreens Pharmacy: 4645 Mission & 965 Geneva Ave
- 
Transportation
 - Balboa Park Station (BART and MUNI): 401 Geneva Ave
- 
Schools
 - Balboa High School: 1000 Cayuga Ave
 - City College of SF: 50 Frida Kahlo Way
 - Cleveland Elementary School: 455 Athens St
 - James Denman Middle School: 241 Oneida Ave
 - Longfellow Elementary School: 755 Morse St
 - Monroe Elementary School: 260 Madrid St
- 
Parks & Playgrounds
 - Crocker Amazon Playground, Park and Dog Park: 799 Moscow St
 - Excelsior Playground: 579 Madrid St
- 
Other
 - Boys & Girls Club: 163 London St
 - Animal Farm Pet Hospital: 5601 Mission

ISLAIS PLACE - 4840 Mission Street - Area Street Parking

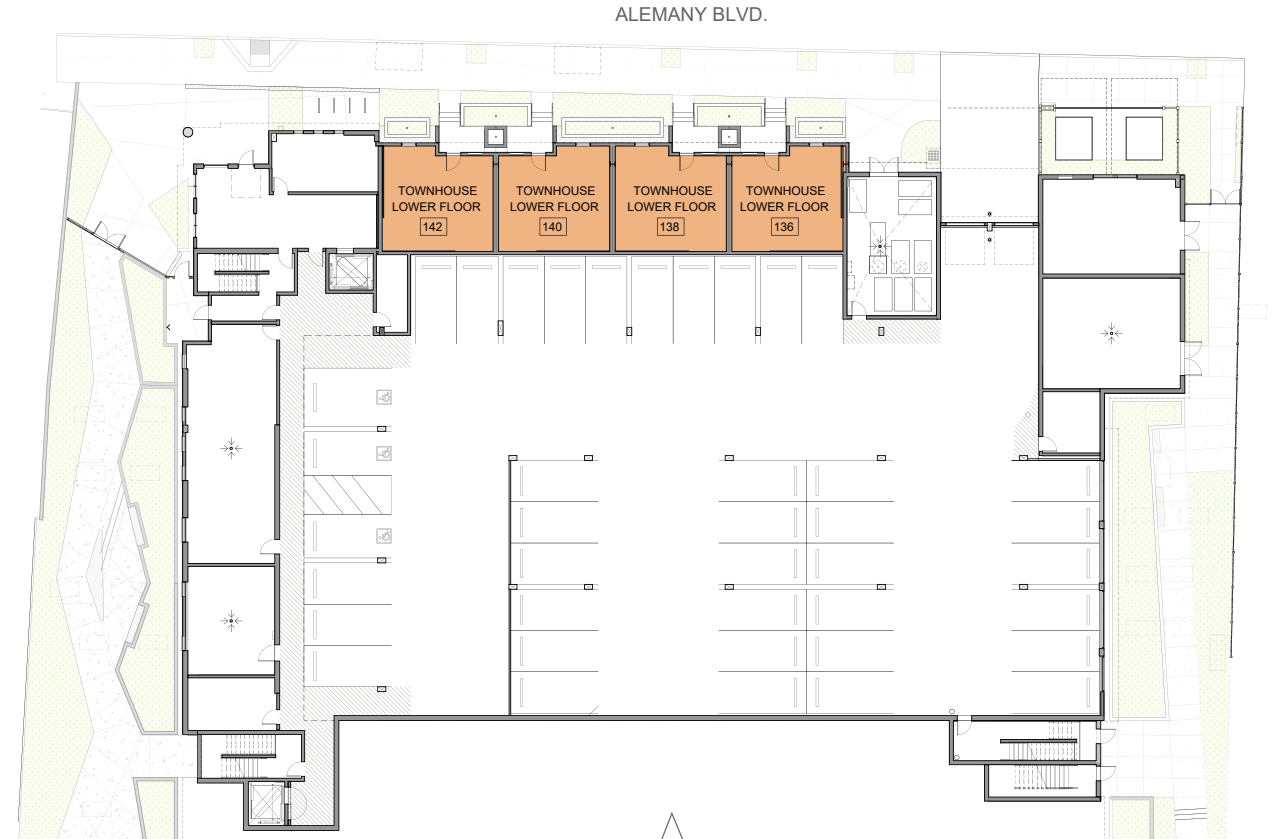
LEGEND

-  No Meters
-  Metered Parking
Enforced 9am - 6pm Daily
-  1/2 Metered Parking
Enforced 9am - 6pm Daily

NP = No Parking



Floor Plans



ISLAIS
PLACE

Floor Plans



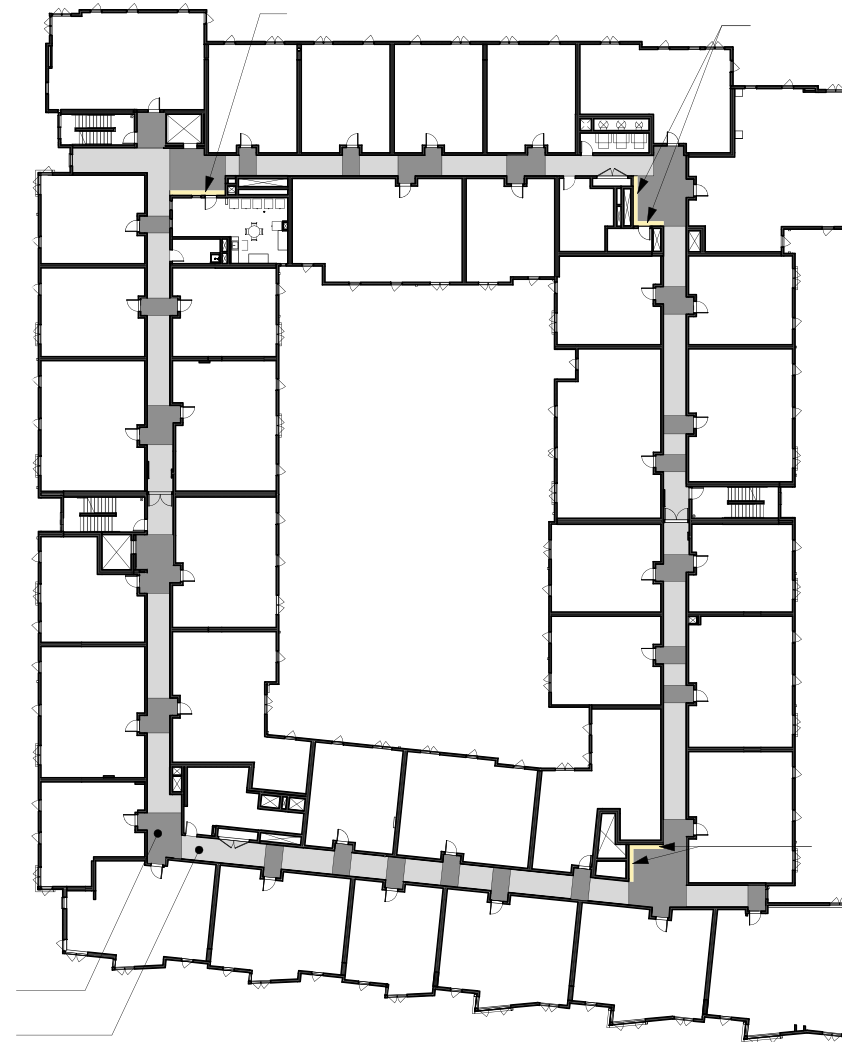
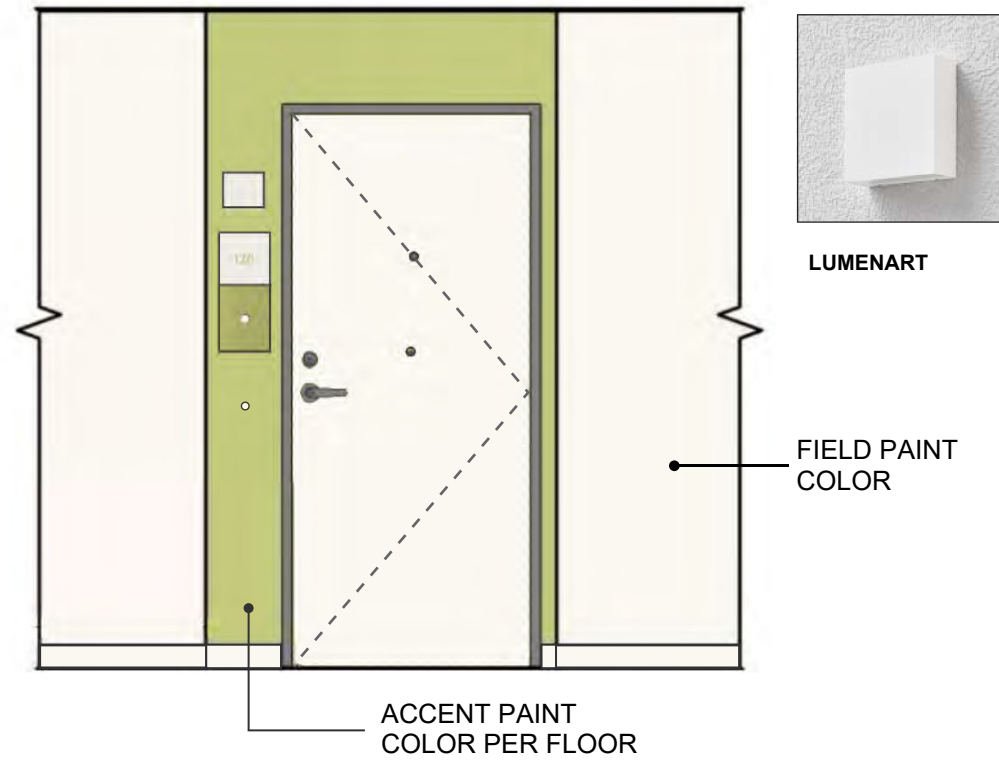
LEVEL 5



LEVEL 4



Corridor and Unit Entry



1ST FLOOR



2ND FLOOR



3RD FLOOR



4TH FLOOR

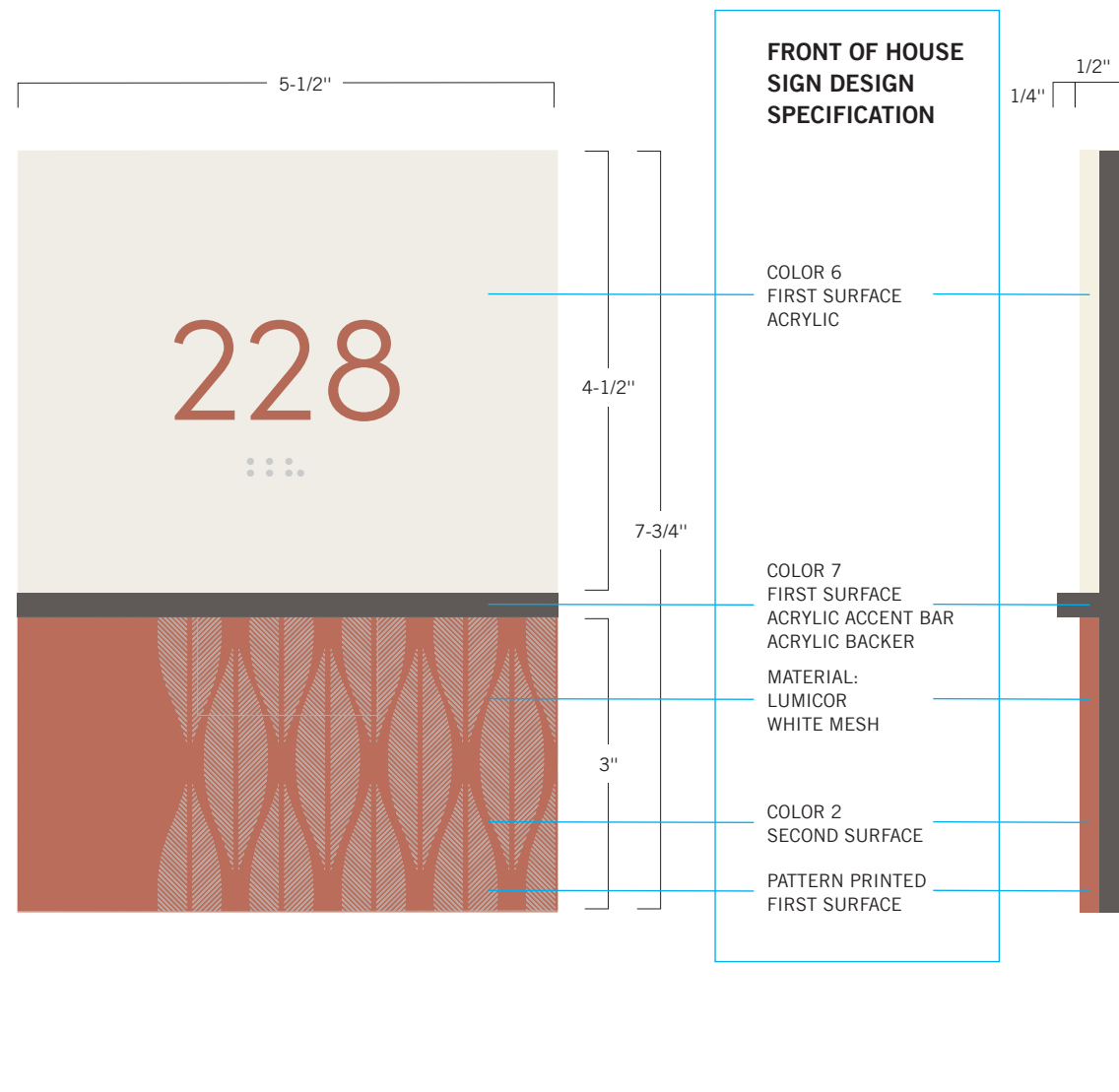


5TH FLOOR

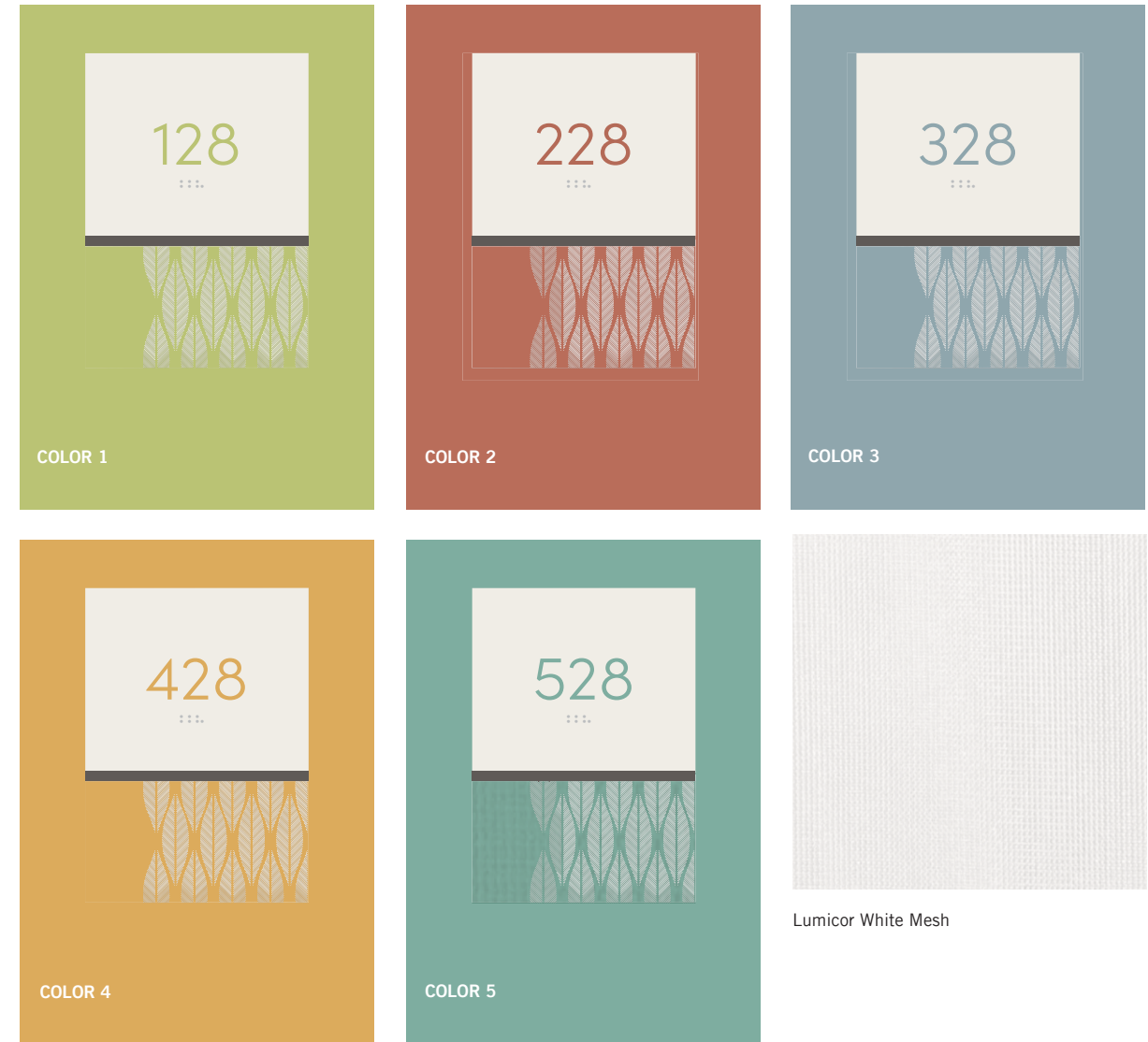


ISLAIS
PLACE

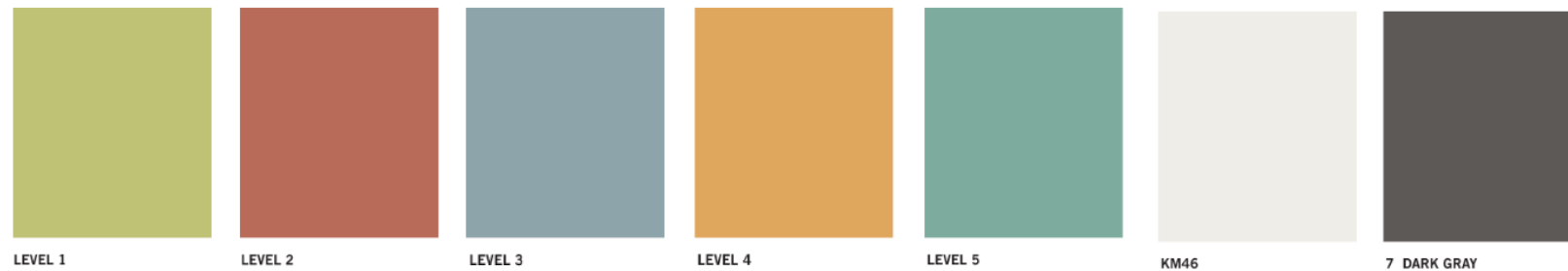
Door Bell



SIGNS ARE PAINTED TO MATCH EACH FLOOR ACCENT COLOR



Sign Colors



ISLAIS
PLACE

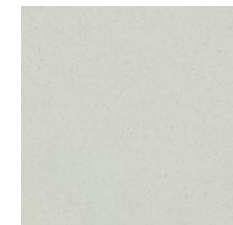
Residential Unit Finishes



FLOOR PLAN



VINYL PLANK FLOORING



SHEET VINYL FLOORING

APPLIANCES



ELECTRIC RANGE



DISH WASHER



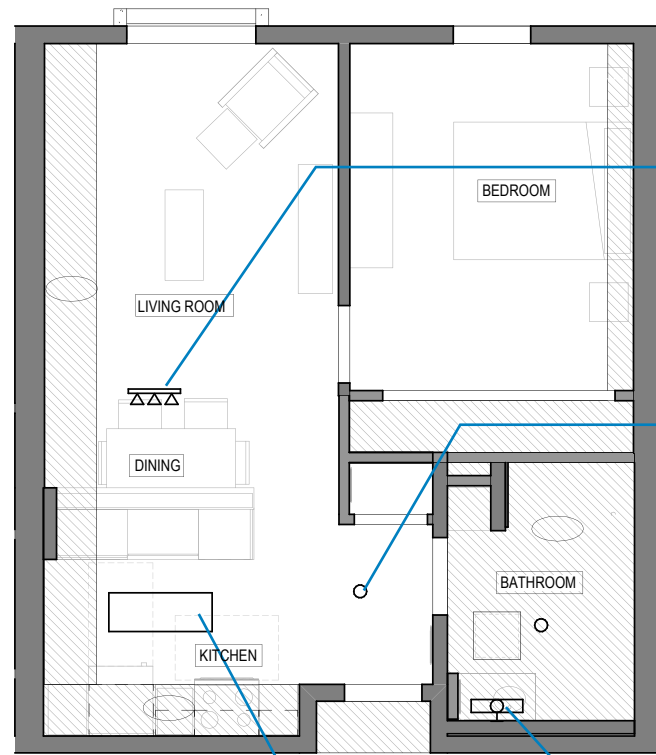
REFRIGERATOR



ISLAIS
PLACE

Residential Unit Finishes

CEILING PLAN



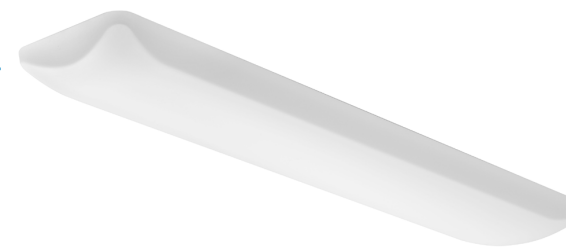
LIGHTING FIXTURES



DINING AREA

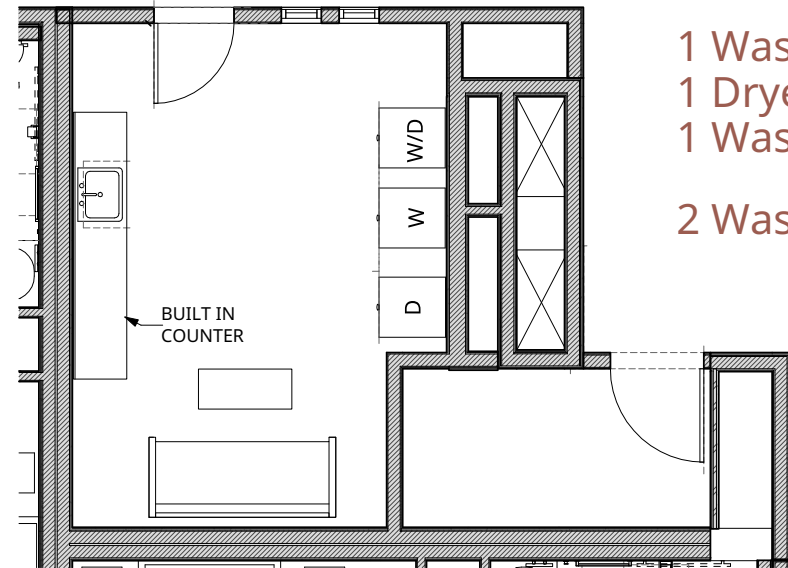


KITCHEN



ISLAIS
PLACE

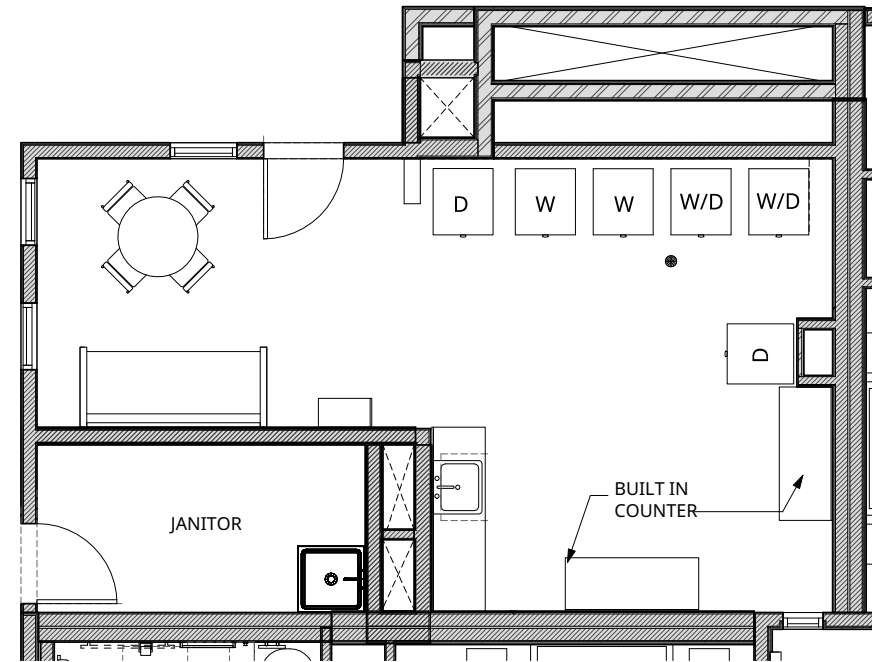
Laundry Rooms



1 Washer/Dryer
1 Dryer
1 Washer

2 Washers 2 Dryers Total

1ST FLOOR LAUNDRY ROOM

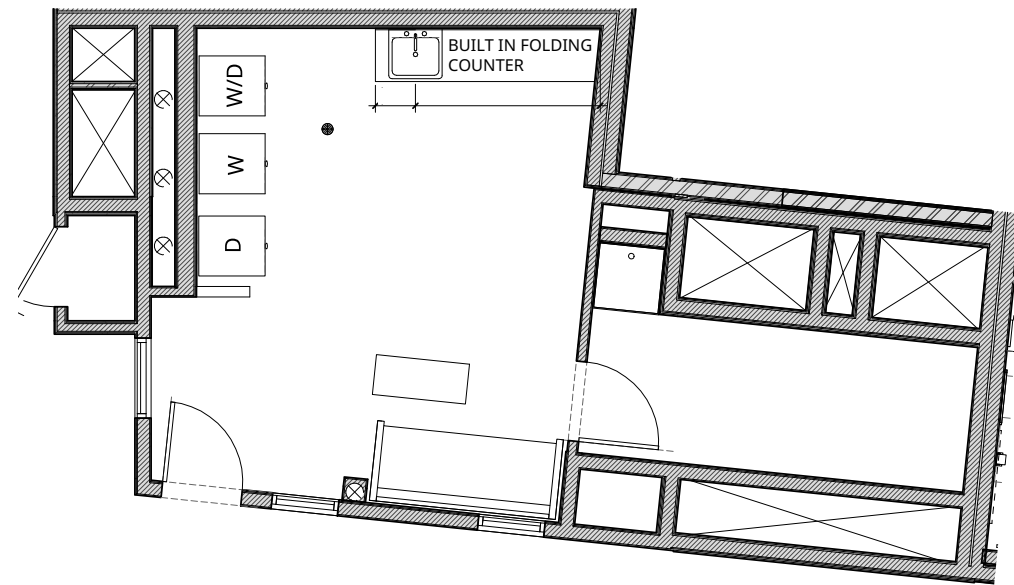


2 Washers/Dryers
2 Dryers
2 Washers

4 Washers 4 Dryers per floor
12 Washers 12 Dryers Total

2ND - 4TH FLOOR LAUNDRY ROOMS

TOTAL
16 Washers
16 Dryers



1 Washer/Dryer
1 Dryer
1 Washer

2 Washers 2 Dryers Total

5TH FLOOR LAUNDRY ROOM



ISLAIS
PLACE