

Date: 4/14/21

Topic: Potrero Phase 2 Infrastructure Dust Control Plan

Dear Potrero residents,

BRIDGE Housing is committed to ensuring that the Phase 2 Infrastructure activities (utilities installation & street paving) have as little impact on you as possible. We have developed an extensive Asbestos Dust Mitigation Plan (ADMP) that outlines requirements for controlling & monitoring any dust that may be generated during construction. From March 2021 – April 2022, ACC Environmental Consultants (ACC) will be onsite during days of soil disturbance implementing dust mitigation procedures. The following Frequently Asked Questions (FAQs) addresses key items.

1. What kind of dust control measures are included in the Phase 2 Infrastructure ADMP?

Dust Suppressants

Inactive areas will be sprayed with a dust suppressant/soil stabilizer and/or covered with a tarp. Active areas of soil disturbance will be watered.



Figure 1: Soil stabilizer application



Figure 2: Dust suppressant (water)



Figure 3: Soil tarping (example)

Track Out

Visible track out will be cleaned at the end of each day by wet sweeping. In addition, a wheel wash station will be installed at all exits. The wheels/tires of construction vehicles will be washed prior to exiting the site.



Figure 4: Site Track-out pad example

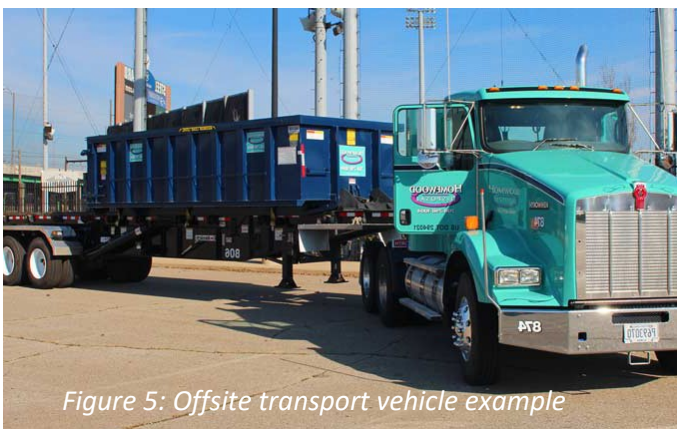


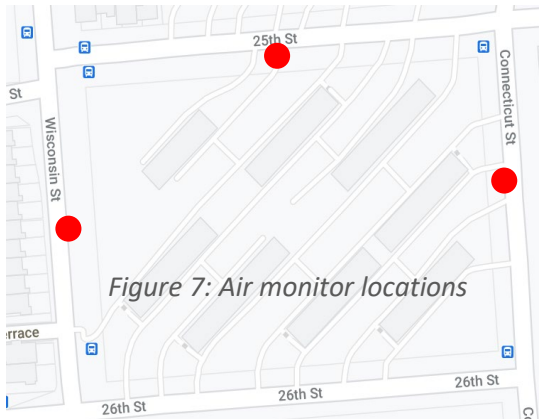
Figure 5: Offsite transport vehicle example

Off-site transport

Prior to departure, transport of soils off the site will be controlled by adequately wetting the soil & covering the loads with tarps.

2. What kind of monitoring of dust control measures will be in place?

In compliance with our ADMP with the Bay Area Air Quality Management District (BAAQMD), we monitor dust & Naturally Occurring Asbestos (NOA). If there is a detection above an “action level,” we investigate & mitigate the cause. The action level is set at a very low level to protect public health. It would take over 70 years of continuous exposure to have a health impact. Exceeding the action level on an occasional basis will not cause any significant health risk.



Air Sampling

There are three air monitors on the site. ACC will conduct air sampling during construction & grading activities that disturb the soil & bedrock. Air sampling will also be conducted at the fence line of the work area during removal activities. Air samples will be analyzed by an independent laboratory.

Air sampling results will be posted on a monthly basis on BRIDGE’s Rebuild Potrero website, www.rebuildpotrero.com/airmonitoring.

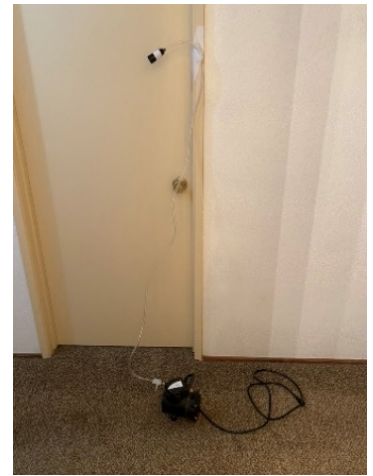


Figure 6: Air sampling monitor cassette & pump used for dust recording

Daily visible inspections

ACC will conduct visible inspections. Visible emissions of dust will be closely monitored. If the contractor is not adequately wetting the soil, ACC will notify the contractor to use more water.

3. What should I do if there is dust on my window or door?

BRIDGE/Shanti Project delivered free cleaning supplies the week of 3/1 to Potrero Terrace/Annex & 1101 Connecticut residents to safely remove any dust (see attached cleaning instructions). To make a replenishment request, contact Marvin Paddock at 415-914-4672.

4. Who can I contact if I have questions?

Cyrus Hoda, Associate Project Manager, BRIDGE Housing
415.321.3585, choda@bridgehousing.com